

KINETICO PREFILTER SERIES

DATA SHEET / OWNERS MANUAL

KINETICO PREFILTERS SERIE B / BP / BPT



KINETICO PREFILTER SERIES

INDEX		P
1	Specification	4
2	Package contents	4
3	Service Ring	6
4	Pressure Reducing Valve	6
5	Installation	6
6	Start Up and Service	7
7	Maintenance	8
8	Automatic Flush Controller	8
9	Troubleshooting	10
	Maintenance service	13

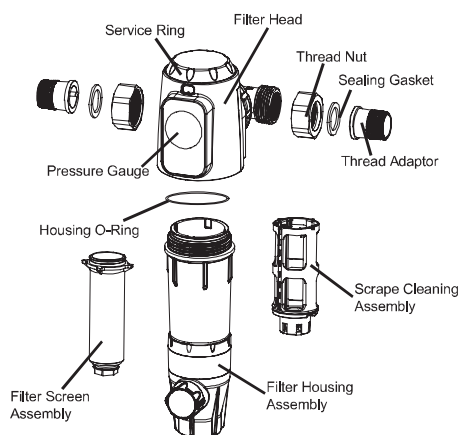
1. SPECIFICATION

PRODUCT MODEL	KF-B 3/4"	KF-B 1"	KF-BP 1"	KF-B 1 1/4"	KF-BPT 1 1/4"
Filter Mesh	40 µm	40 µm	40 µm	40 µm	40 µm
Connection Thread	3/4"or 1"	3/4"or 1"	3/4"or 1"	1"or 1/4"	1"or 1/4"
Rated Flow Rate	3 m³/h	4 m³/h	4 m³/h	8 m³/h	8 m³/h
Pressure Drop	0.2 Bar	0.2 Bar	0.2 Bar	0.2 Bar	0.2 Bar
WaterTemperature	5-40°C	5-40°C	5-40°C	5-40°C	5-40°C
Water Supply	Municipal	Municipal	Municipal	Municipal	Municipal
Water Pressure	0.1-1MPa	0.1-1MPa	0.1-1MPa	0.1-1MPa	0.1-1MPa

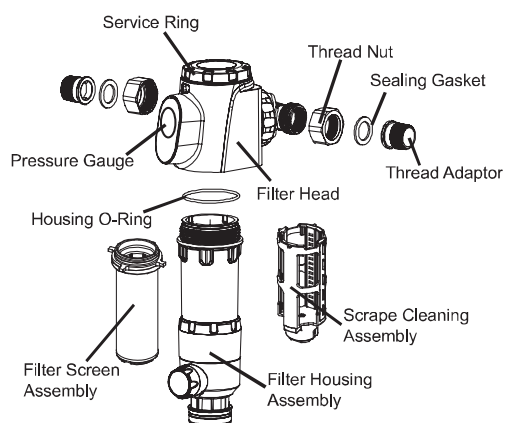
2. PACKAGE CONTENTS

ACCESORIES MODEL	KF-B 3/4"	KF-B 1"	KF-BP 1"	KF-B 1 1/4"	KF-BPT 1 1/4"
Pre-Filter Assembly	x 1	x 1	x 1	x 1	x 1
Thread Adaptor (3/4" male)	x 2	x 2	x 2	-	-
Thread Adaptor (1" male)	-	-	-	x 2	x 2
Sealing Gasket	x 3	x 3	x 3	x 3	x 3
Bracket	x 1	x 1	x 1	x 1	x 1
Filter Housing Wrench	x 1	x 1	x 1	x 1	x 1
Housing O-Ring	x 1	x 1	x 1	x 1	x 1
Drain connector O-Ring	-	-	x 2	x 1	x 1
Swelling Screw	x 2	x 2	x 2	x 2	x 2
Self-Tapping Screw	x 2	x 2	x 1	x 2	x 2
Pressure Gauge	x 1	x 1	x 1	x 1	x 1
Automatic Flush Controller	-	-	-	-	x 1
Power adaptor	-	-	-	-	x 1
Manual	x 1	x 1	x 1	x 1	x 1

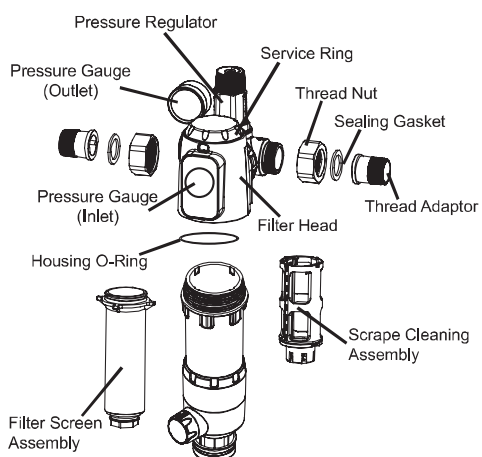
EXPLODED VIEWS



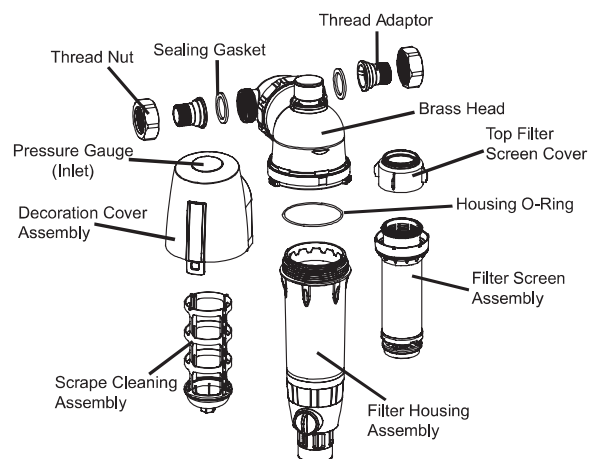
KF-B 3/4"



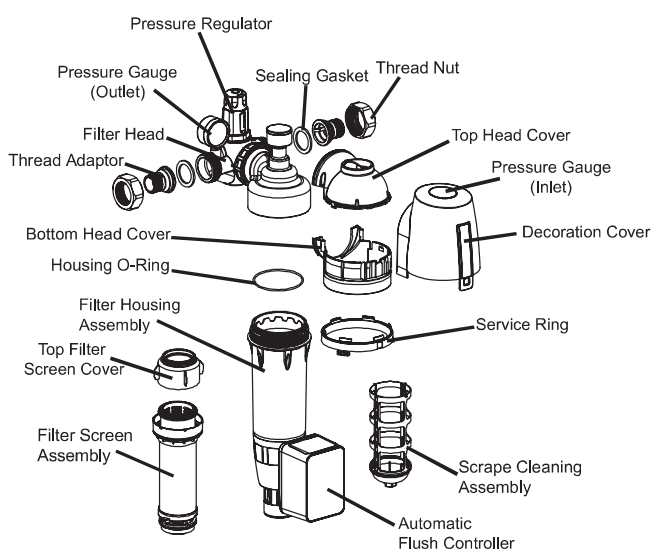
KF-B 1"



KF-BP 1"



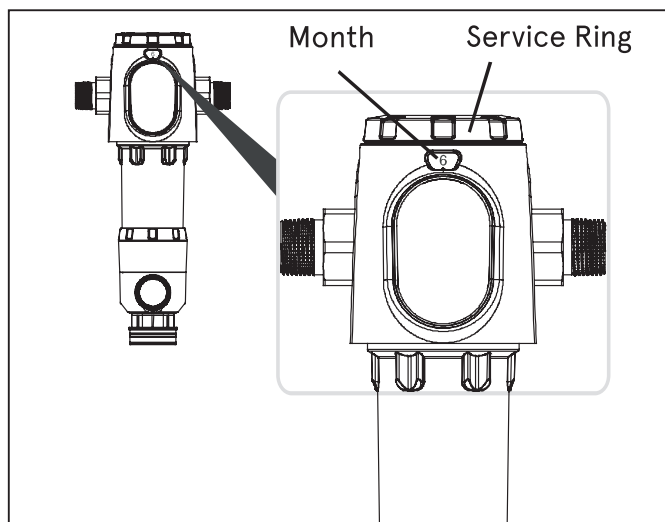
KF-B 1 1/4"



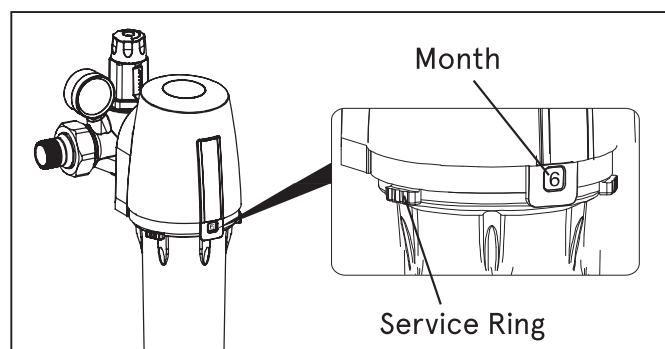
KF-BPT 1 1/4"

3. SERVICE RING

When the process of flushing filter is completed, set the number on service ring to the current month as a reminder by means of rotating the service ring on top.



3.1. Applied on model KF-B 3/4", KF-B 1", KF-BP 1"



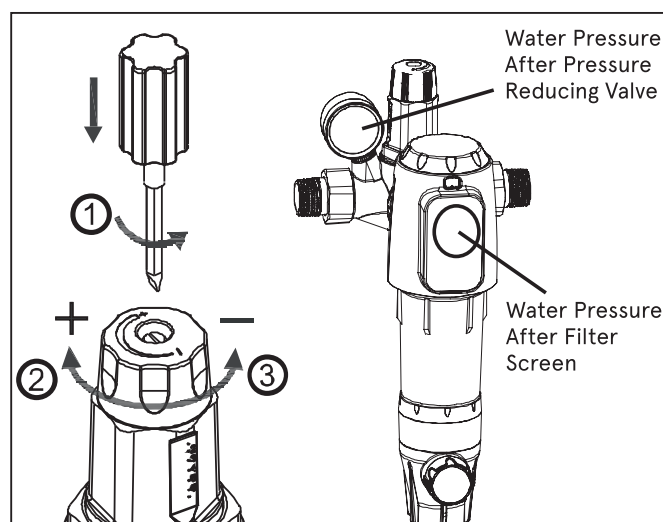
3.2. Applied on models KF-B 1 1/4", KF-BPT 1 1/4"

4. PRESSURE REDUCING VALVE

The pressure reducing valve installed on P-series products can effectively prevent the damage to water equipments caused by high pressure or water hammer. The pressure reducing valve is factory set to 4 bar and can be adjusted in a range from 1 to 6 bar, follow the instructions below to adjust the outlet pressure.

1. Use flathead screwdriver to unfasten the locking screw.
2. To increase the pressure: turn the adjustment knob in the direction of the plus symbol (+) and observe the outlet pressure gauge. (Outlet pressure is always lower than inlet pressure)
3. To reduce the pressure: turn the adjustment knob in the direction of the minus symbol (-).
4. When the desired outlet pressure is reached, tighten the locking screw again.

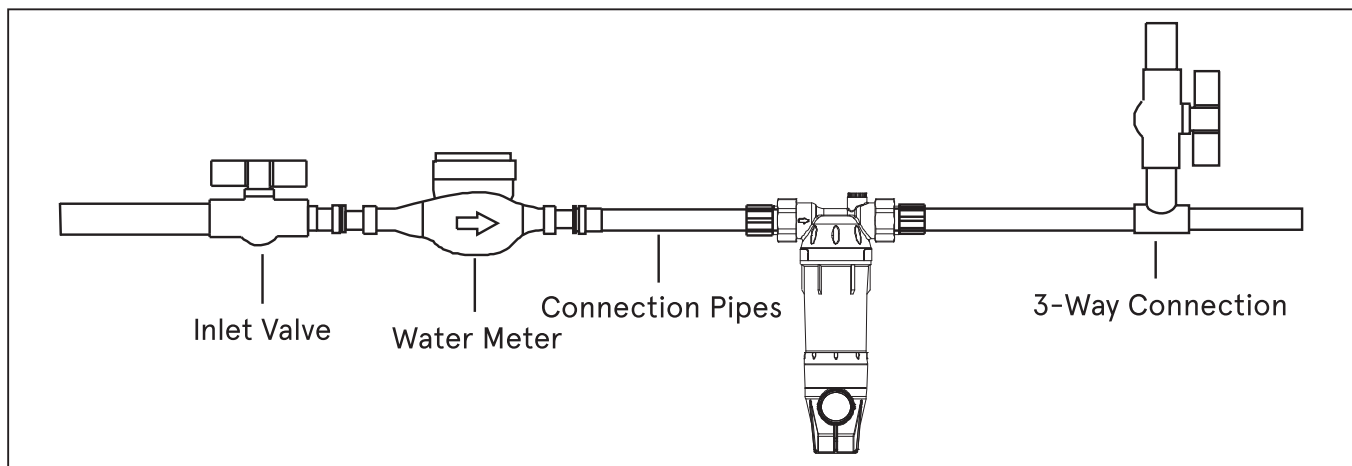
! Note: ensure the water equipment are all closed before you start to adjust the pressure reducing valve, in the process of adjusting outlet pressure, drainage ball valve need to be open&close many times, observe the outlet pressure gauge when the ball valve is closed.



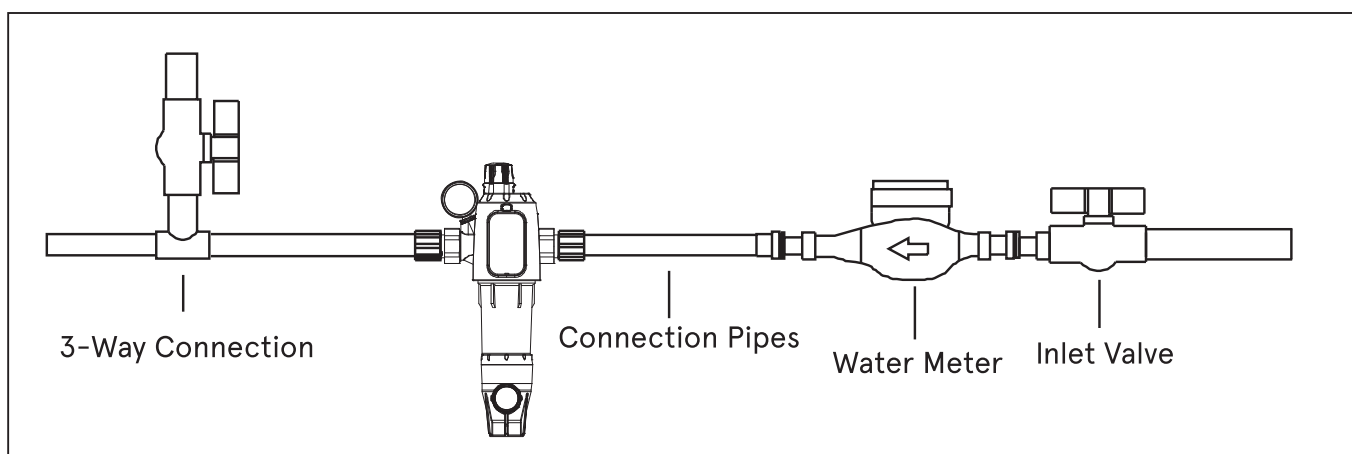
5. INSTALLATION

Close the inlet valve, release the pressure in pipes.

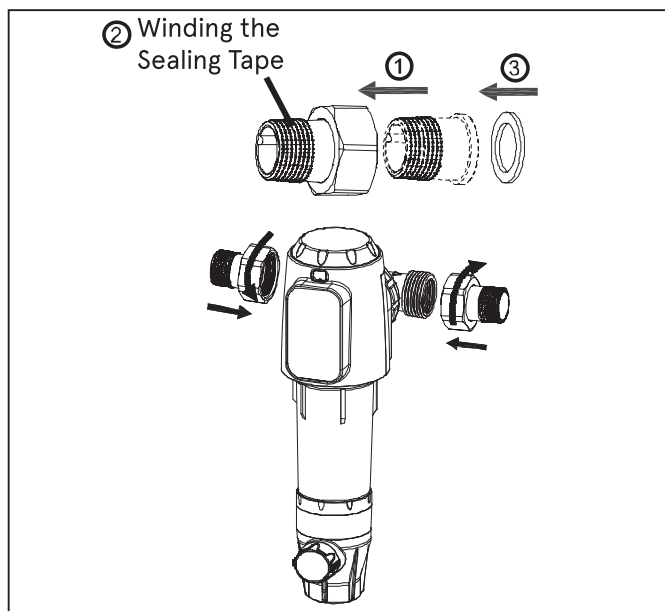
- Install the pre-filter as the figure indicated above.
- When installing, make sure to observe the correct direction of flow. An arrow on the brass head indicates the direction of flow.
- Install the filter with main axis in vertical position.
- Pre-filter must be installed by a qualified person. Check to ensure the accessories are complete before installation.
- Special welding machine is required if the PPR pipe line are used for plumbing, ensure the pipes are welding securely.
- Extra pipe lines are required if metal pipe line are used for plumbing, please follow the local plumbing codes.
- Do not install the pre-filter outdoors, which are exposed to UV radiation(sunlight), heat, oil or various chemicals.
- Use enough thread tape and make sure it is winding evenly.
- Make sure the other parts are not rotating when you tighten the thread nut.
- After the plumbing work is done, check it thoroughly to make sure if there is any leakage.



EXAMPLE OF E-SERIES



EXAMPLE OF L-SERIES



6. START UP AND SERVICE

1. It is required to flush the pre-filter after installation.
2. Before flushing the pre-filter, ensure the drain pipe is connected to drain or it is fine to get one suitable container to gather the drain water.
3. Rotate the flush knob for 90° clockwise to open the drainage valve, then rotate the bottom part for 3 to 4 circles clockwise and anti-clockwise to effectively

clean the filter screen and filter housing.

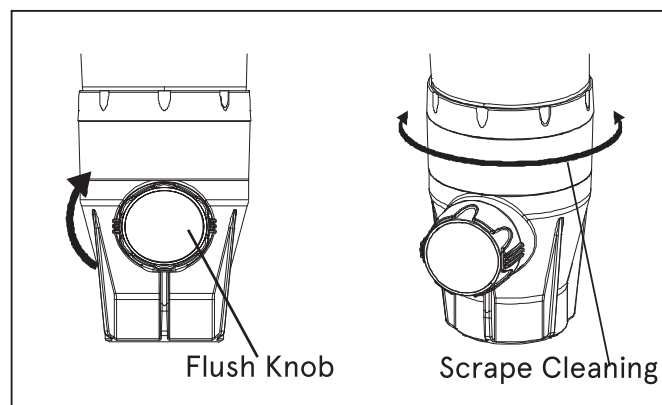
4. According to different water quality, it is required to flush the pre-filter once per month at least and flush pre-filter for more than 30 seconds.

5. As the pre-filter is continuously used for 8~ 12 months, the filter screen may require to be dismantled and clean. (This should be done by a qualified person)

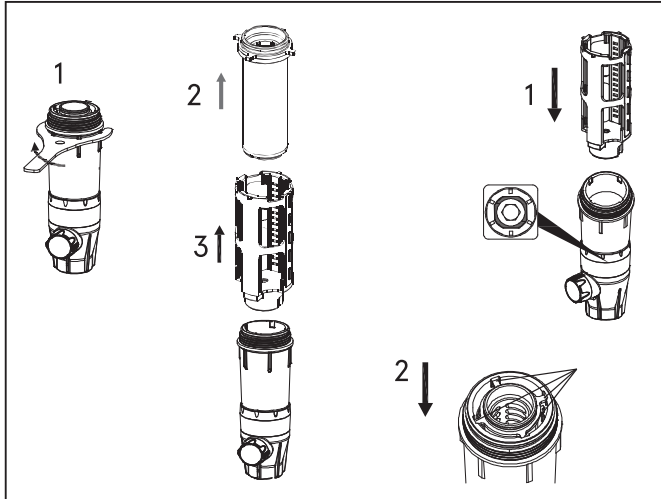
6. Every component should be taken care of during cleaning or maintaining process. (Original spare parts must be used for maintenance)

7. MAINTENANCE

7.1. KF-B 3/4, KF-B 1", KF-BP 1"



1. It is suggested to dismantle and clean the filter screen assembly if the contamination can not be removed by the process of normal scape or flush cleaning.



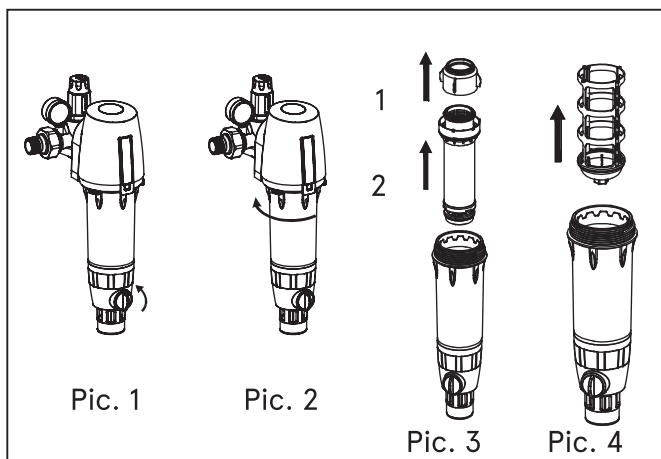
2. Use the wrench attached in carton box to screw off the filter housing.

3. Take out the filter screen assembly, clean the contamination on filter screen. (Scrape cleaning assembly is not required to take out if just filter screen assembly need to be cleaned)

4. Aligning the scrape cleaning assembly, make sure to insert the scraping assembly to the bottom of copper fitting.

5. Aligning the four location holders on filter screen assembly to the four grooves on filter housing, then make sure to insert the filter screen assembly to the bottom of filter housing.

7.2. KF-B 1/4", KF-BPT 1/4"



1. It is suggested to dismantle and clean the filter screen assembly if the contamination can not be removed by the process of normal scape or flush cleaning.

2. Shut off the inlet water supply, release the water pressure by means of rotating the flush knob for 90° anti-clockwise. (Pic.1)

3. Use the wrench attached in carton box to screw off the filter housing. (Pic.2)

4. Take out the top screen cover and filter screen as-

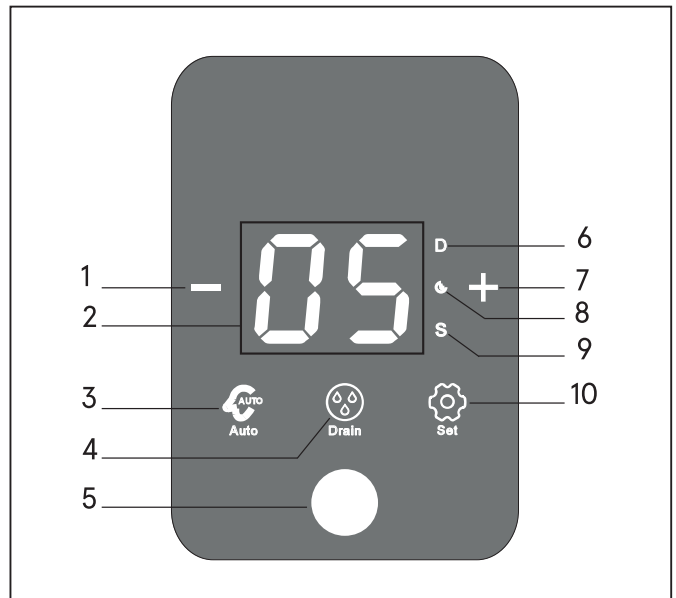
sembly, then clean the contamination on top screen cover and filter screen assembly. (Pic.3)

5. Take out the scrape cleaning assembly if this part need to be cleaned. (Pic.4)

6. After servicing, reverse following steps to reassemble the pre-filter.

8. AUTOMATIC FLUSH CONTROLLER

8.1. Applied on model KF-BPT 1 1/4"



1. Decrease.

2. Number of Days / Seconds.

3. Set to Automatic Control.

4. Manual Flush.

5. Sleep&Wake/reset. (Press and hold) for 8s to reset)

6. Interval time (Days)

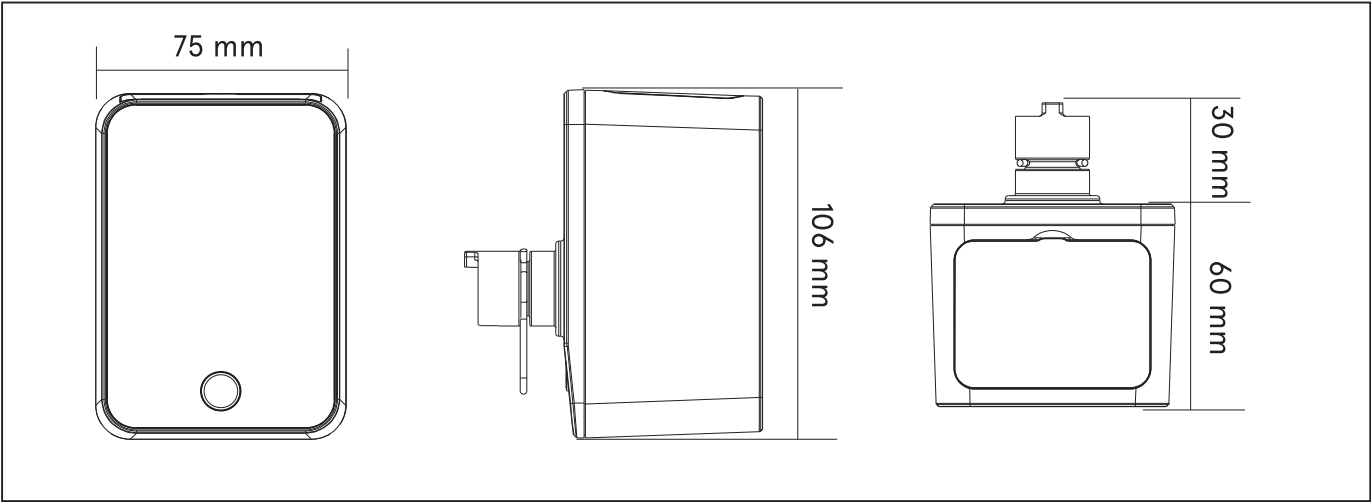
7. Increase

8. Standby Countdown

9. Flush Duration (seconds)

10. Set Days / Seconds

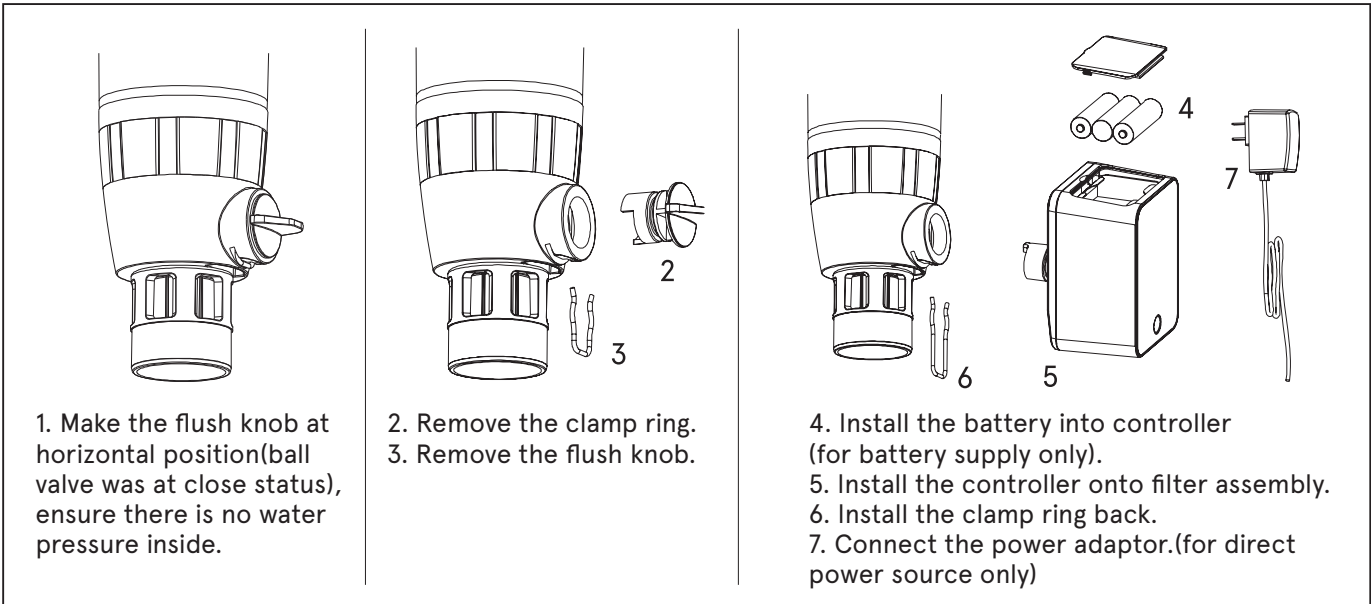
8.2. Controller dimension



8.3. Controller specification

PRODUCT MODEL	BPT - Controller
Power supply (Battery):	Three AA Size Dry Batteries
Power supply (Adaptor):	Input 100~ 240V AC 50/60Hz Output 5V DC 1 A
Ambient Temperature:	5~40 C
Flush Duration Setting:	15s/30s/45s/60s/90s
Flush Interval Setting:	1~99 Days
Auto Setting:	15 Days/15 Seconds

8.4. How to install automatic flush controller on KF-BPT 1 1/4"



! Note: 1. The installation process above must be followed and should be done by a qualified person.
2. After installation, manual/y operate the automatic controller to open&close the ba/1 va/ve severa/ times to check if it is working properly.

9. TROUBLESHOOTING

PROBLEM	POSSIBLE CAUSES	POSSIBLE SOLUTION
No Product Water	1. Water supply is shut off. 2. Inlet valve is not open.	1. Wait water supply restore. 2. Open the inlet valve.
Not Enough Product Water.	1. Inlet valve is not fully open. 2. Filter screen is clogged.	1. Open the inlet valve completely. 2. Flush and clean the filter screen assembly, remove the debris.
Leaks on Connection	1. Connection is not installed well. 2. Connection is not tightened. 3. Not winding enough thread tape. 4. Sealing gasket is aging and damaged.	1. Check and make sure the sealing gasket is flat and not be squeezed. 2. Use the wrench to tight it. 3. Use enough thread tape and make sure it is winding evenly. 4. Replace the sealing gasket.
No Pressure Displayed	1. Pressure gauge damaged. 2. No water supply.	1. Replace the pressure gauge. 2. Open the inlet valve.
Display Error Code "EO"	Low Battery Power.	Replace Battery Power
Display Error Code "E1"	Ball valve not open completely.	1. Press and hold Reset Key for 8s to reset control module. 2. If Reset process not work, replace control module.
Display Error Code "E2"	Ball valve not open completely.	1. Press and hold Reset Key for 8s to reset control module. 2. If Reset process not work, replace control module.





MAINTENANCE SERVICE

DATE	SERVICE TYPE	NAME, SIGNATURE AND STAMP OF AUTHORISED TECHNICIAN	
<input type="text"/>	<input type="checkbox"/> INITIAL OPERATION		
<input type="text"/>	<input type="checkbox"/> MAINTENANCE COMPLETE	TECHNICIAN <input type="text"/>	<input type="checkbox"/> ORDINARY <input type="checkbox"/> EXTRAORDINARY <input type="checkbox"/> WARRANTY
<input type="text"/>	<input type="checkbox"/> PREPARATION	STAMP <input type="text"/>	
<input type="text"/>	<input type="checkbox"/> SANITIZING		
<input type="text"/>	<input type="checkbox"/> OTHERS		
<input type="text"/>	<input type="checkbox"/> MAINTENANCE COMPLETE	TECHNICIAN <input type="text"/>	<input type="checkbox"/> ORDINARY <input type="checkbox"/> EXTRAORDINARY <input type="checkbox"/> WARRANTY
<input type="text"/>	<input type="checkbox"/> PREPARATION	STAMP <input type="text"/>	
<input type="text"/>	<input type="checkbox"/> SANITIZING		
<input type="text"/>	<input type="checkbox"/> OTHERS		
<input type="text"/>	<input type="checkbox"/> MAINTENANCE COMPLETE	TECHNICIAN <input type="text"/>	<input type="checkbox"/> ORDINARY <input type="checkbox"/> EXTRAORDINARY <input type="checkbox"/> WARRANTY
<input type="text"/>	<input type="checkbox"/> PREPARATION	STAMP <input type="text"/>	
<input type="text"/>	<input type="checkbox"/> SANITIZING		
<input type="text"/>	<input type="checkbox"/> OTHERS		
<input type="text"/>	<input type="checkbox"/> MAINTENANCE COMPLETE	TECHNICIAN <input type="text"/>	<input type="checkbox"/> ORDINARY <input type="checkbox"/> EXTRAORDINARY <input type="checkbox"/> WARRANTY
<input type="text"/>	<input type="checkbox"/> PREPARATION	STAMP <input type="text"/>	
<input type="text"/>	<input type="checkbox"/> SANITIZING		
<input type="text"/>	<input type="checkbox"/> OTHERS		
<input type="text"/>	<input type="checkbox"/> MAINTENANCE COMPLETE	TECHNICIAN <input type="text"/>	<input type="checkbox"/> ORDINARY <input type="checkbox"/> EXTRAORDINARY <input type="checkbox"/> WARRANTY
<input type="text"/>	<input type="checkbox"/> PREPARATION	STAMP <input type="text"/>	
<input type="text"/>	<input type="checkbox"/> SANITIZING		
<input type="text"/>	<input type="checkbox"/> OTHERS		



MAINTENANCE SERVICE

DATE	SERVICE TYPE	NAME, SIGNATURE AND STAMP OF AUTHORISED TECHNICIAN	
<div></div>	<div><input type="checkbox"/> INITIAL OPERATION</div>		
<div></div>	<div><input type="checkbox"/> MAINTENANCE COMPLETE</div>	TECHNICIAN	<div><input type="checkbox"/> ORDINARY</div> <div><input type="checkbox"/> EXTRAORDINARY</div> <div><input type="checkbox"/> WARRANTY</div>
<div></div>	<div><input type="checkbox"/> PREPARATION</div>	STAMP	
<div></div>	<div><input type="checkbox"/> SANITIZING</div>		
<div></div>	<div><input type="checkbox"/> OTHERS</div>		
<div></div>	<div><input type="checkbox"/> MAINTENANCE COMPLETE</div>	TECHNICIAN	<div><input type="checkbox"/> ORDINARY</div> <div><input type="checkbox"/> EXTRAORDINARY</div> <div><input type="checkbox"/> WARRANTY</div>
<div></div>	<div><input type="checkbox"/> PREPARATION</div>	STAMP	
<div></div>	<div><input type="checkbox"/> SANITIZING</div>		
<div></div>	<div><input type="checkbox"/> OTHERS</div>		
<div></div>	<div><input type="checkbox"/> MAINTENANCE COMPLETE</div>	TECHNICIAN	<div><input type="checkbox"/> ORDINARY</div> <div><input type="checkbox"/> EXTRAORDINARY</div> <div><input type="checkbox"/> WARRANTY</div>
<div></div>	<div><input type="checkbox"/> PREPARATION</div>	STAMP	
<div></div>	<div><input type="checkbox"/> SANITIZING</div>		
<div></div>	<div><input type="checkbox"/> OTHERS</div>		
<div></div>	<div><input type="checkbox"/> MAINTENANCE COMPLETE</div>	TECHNICIAN	<div><input type="checkbox"/> ORDINARY</div> <div><input type="checkbox"/> EXTRAORDINARY</div> <div><input type="checkbox"/> WARRANTY</div>
<div></div>	<div><input type="checkbox"/> PREPARATION</div>	STAMP	
<div></div>	<div><input type="checkbox"/> SANITIZING</div>		
<div></div>	<div><input type="checkbox"/> OTHERS</div>		
<div></div>	<div><input type="checkbox"/> MAINTENANCE COMPLETE</div>	TECHNICIAN	<div><input type="checkbox"/> ORDINARY</div> <div><input type="checkbox"/> EXTRAORDINARY</div> <div><input type="checkbox"/> WARRANTY</div>
<div></div>	<div><input type="checkbox"/> PREPARATION</div>	STAMP	
<div></div>	<div><input type="checkbox"/> SANITIZING</div>		
<div></div>	<div><input type="checkbox"/> OTHERS</div>		

MAINTENANCE SERVICE

DATE	SERVICE TYPE	NAME, SIGNATURE AND STAMP OF AUTHORISED TECHNICIAN	
<input type="text"/>	<input type="checkbox"/> INITIAL OPERATION		
<input type="text"/>	<input type="checkbox"/> MAINTENANCE COMPLETE	TECHNICIAN <input type="text"/>	<input type="checkbox"/> ORDINARY <input type="checkbox"/> EXTRAORDINARY <input type="checkbox"/> WARRANTY
<input type="text"/>	<input type="checkbox"/> PREPARATION	STAMP <input type="text"/>	
<input type="text"/>	<input type="checkbox"/> SANITIZING		
<input type="text"/>	<input type="checkbox"/> OTHERS		
<input type="text"/>	<input type="checkbox"/> MAINTENANCE COMPLETE	TECHNICIAN <input type="text"/>	<input type="checkbox"/> ORDINARY <input type="checkbox"/> EXTRAORDINARY <input type="checkbox"/> WARRANTY
<input type="text"/>	<input type="checkbox"/> PREPARATION	STAMP <input type="text"/>	
<input type="text"/>	<input type="checkbox"/> SANITIZING		
<input type="text"/>	<input type="checkbox"/> OTHERS		
<input type="text"/>	<input type="checkbox"/> MAINTENANCE COMPLETE	TECHNICIAN <input type="text"/>	<input type="checkbox"/> ORDINARY <input type="checkbox"/> EXTRAORDINARY <input type="checkbox"/> WARRANTY
<input type="text"/>	<input type="checkbox"/> PREPARATION	STAMP <input type="text"/>	
<input type="text"/>	<input type="checkbox"/> SANITIZING		
<input type="text"/>	<input type="checkbox"/> OTHERS		
<input type="text"/>	<input type="checkbox"/> MAINTENANCE COMPLETE	TECHNICIAN <input type="text"/>	<input type="checkbox"/> ORDINARY <input type="checkbox"/> EXTRAORDINARY <input type="checkbox"/> WARRANTY
<input type="text"/>	<input type="checkbox"/> PREPARATION	STAMP <input type="text"/>	
<input type="text"/>	<input type="checkbox"/> SANITIZING		
<input type="text"/>	<input type="checkbox"/> OTHERS		
<input type="text"/>	<input type="checkbox"/> MAINTENANCE COMPLETE	TECHNICIAN <input type="text"/>	<input type="checkbox"/> ORDINARY <input type="checkbox"/> EXTRAORDINARY <input type="checkbox"/> WARRANTY
<input type="text"/>	<input type="checkbox"/> PREPARATION	STAMP <input type="text"/>	
<input type="text"/>	<input type="checkbox"/> SANITIZING		
<input type="text"/>	<input type="checkbox"/> OTHERS		